

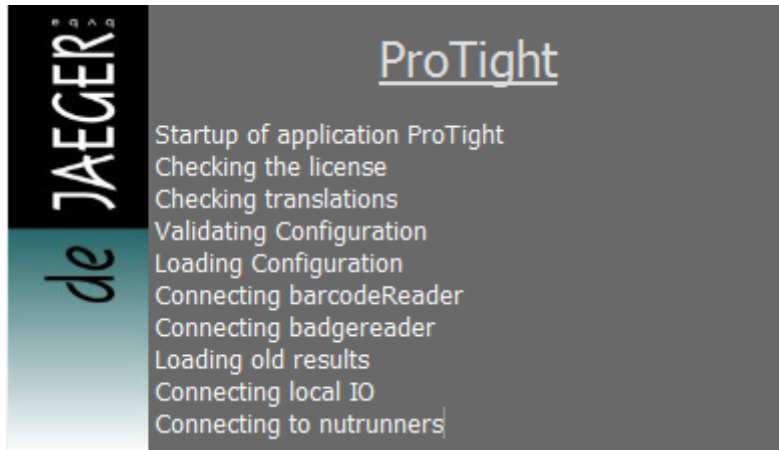
ProTight™

Quick Start Guide

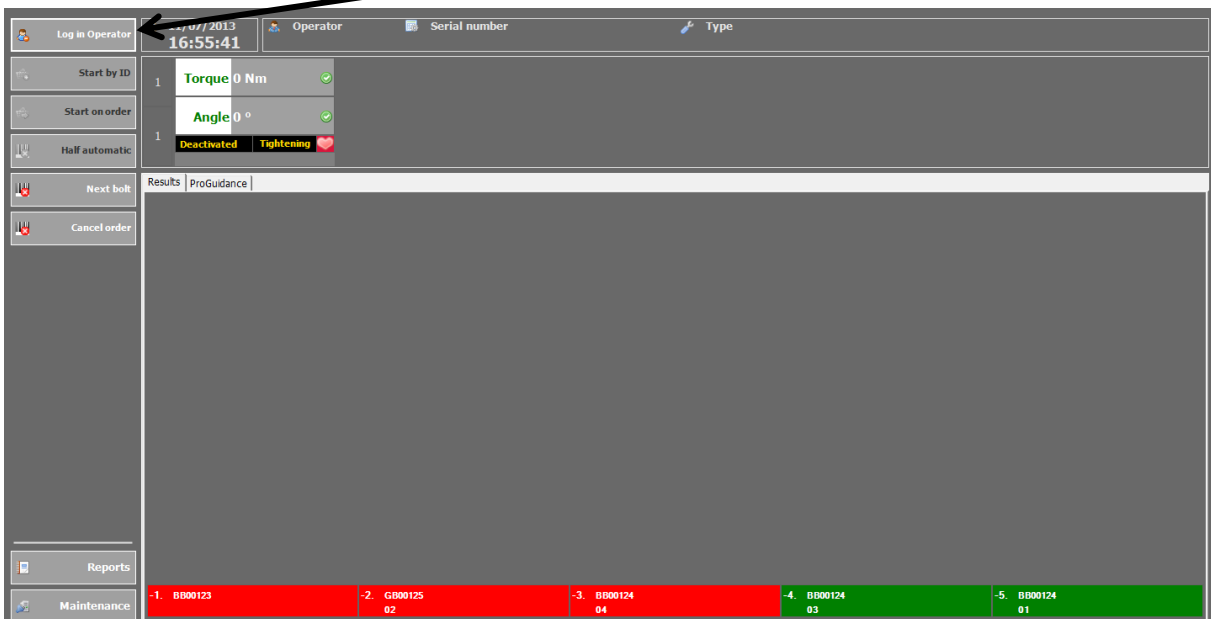
Launch the ProTight app



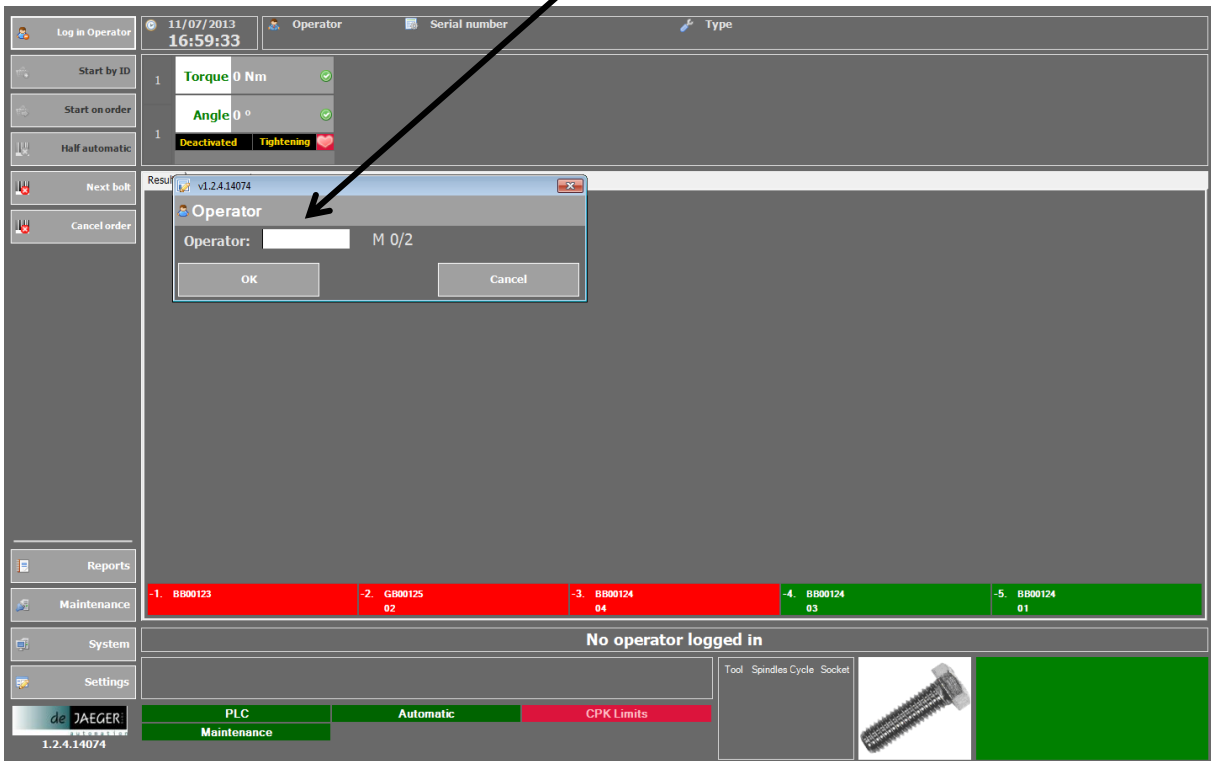
Wait during the loading



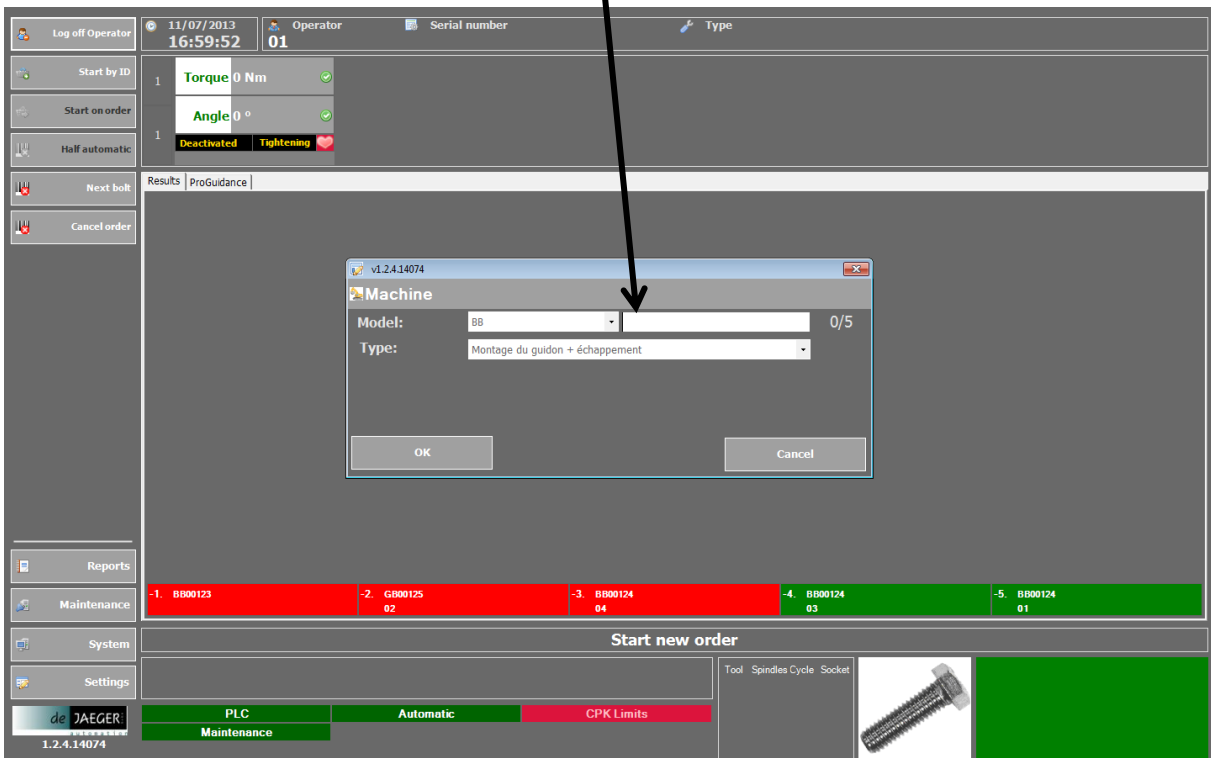
Log in



Enter the operator ID



Scan the type of assembly



You can follow the actions on the Proguidance window

Log off Operator 11/07/2013 17:01:04 Operator 01 Serial number BB00123 Type Montage du guidon + échappement


Start by ID 1 Torque 0 Nm

Start on order 1 Angle 0 °

Half automatic 1 Active tool righteasing

Next bolt Results Proguidance

Cancel order



Reports

Maintenance

System

Settings


3 x Accélérateur: Spindles 1, Cycle 1, Socket 0, Position 0

Tool	Spindles	Cycle	Socket
1	1	1	0

de JAEGER 1.2.4.14074

PLC Automatic CPK Limits

Maintenance



0 / 4